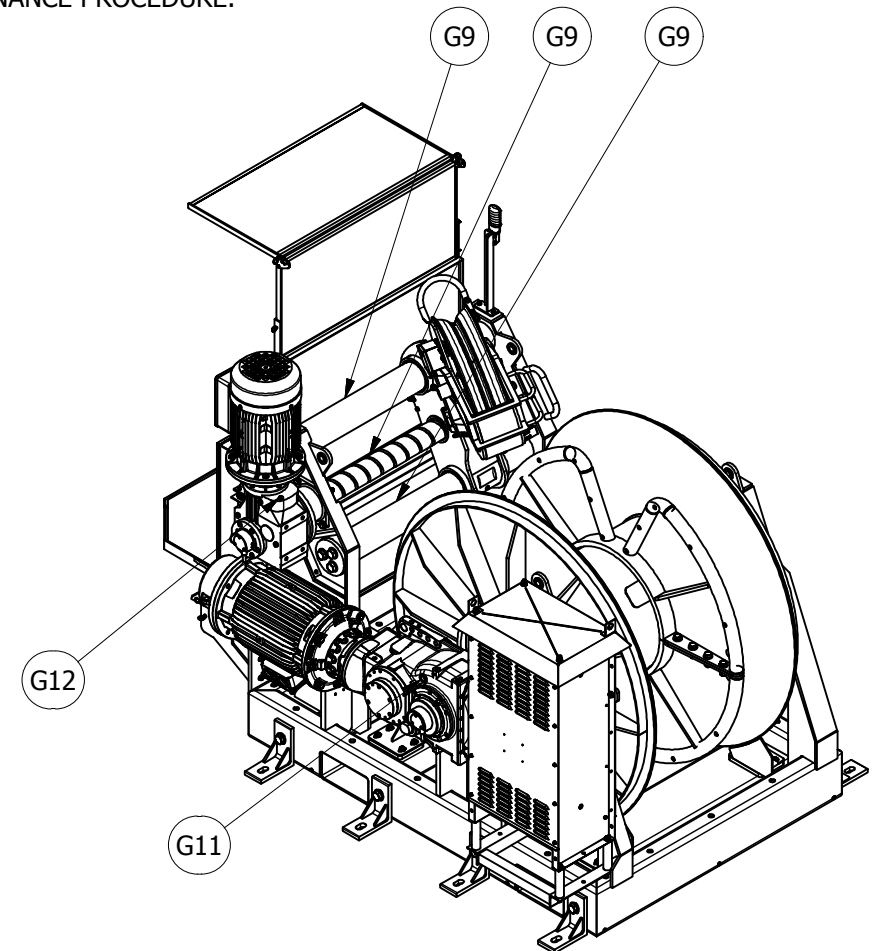
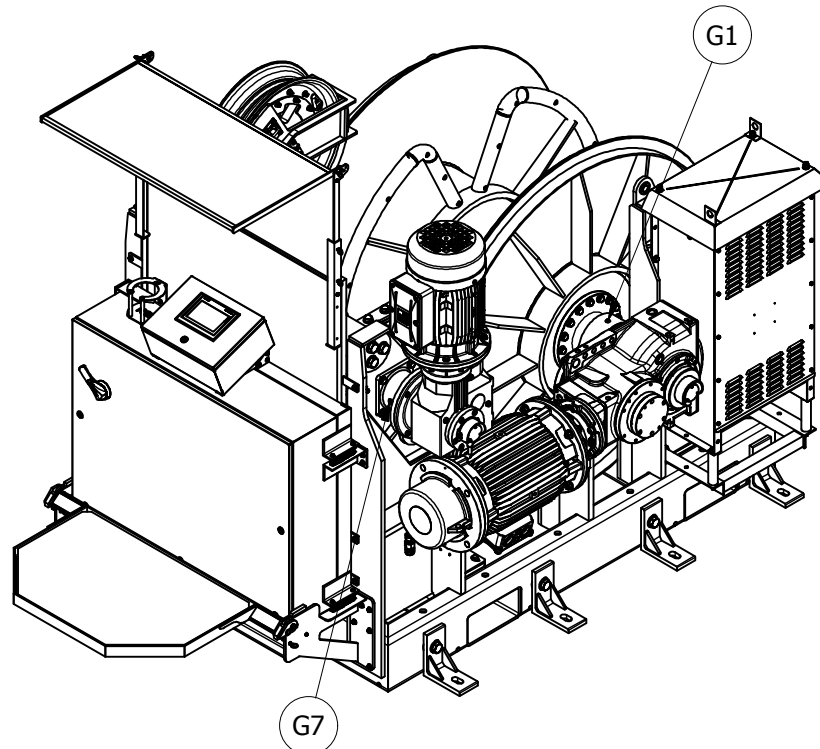
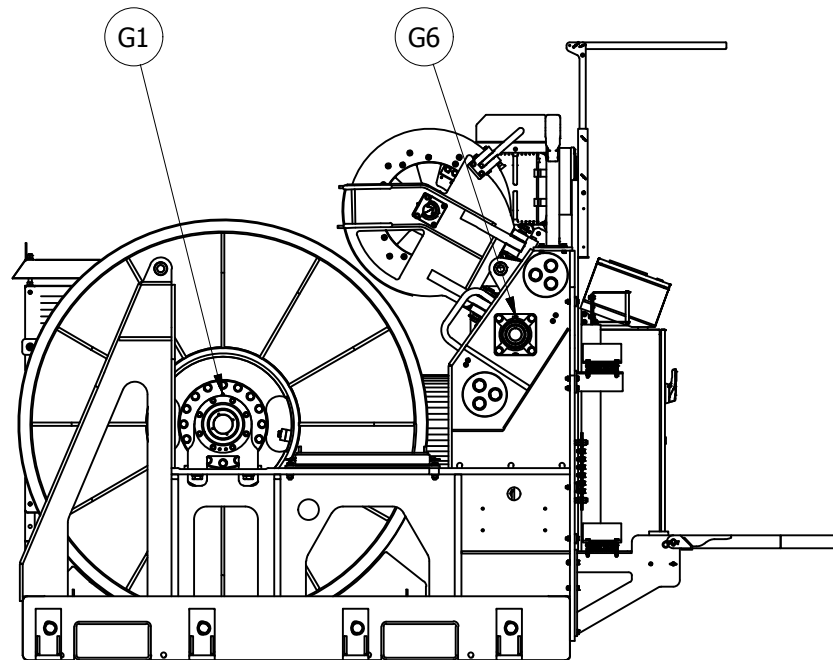


LUBRICATION POINTS			
LOCATION	DESCRIPTION	INTERVAL	TYPE
G1	DRUM BEARING	20 HRS OPERATION	EP2 GREASE
G2	SHEAVE BEARING	20 HRS OPERATION	EP2 GREASE
G3	LOAD PIN BEARING	20 HRS OPERATION	EP2 GREASE
G4	LEVELWIND CARRIAGE BUSHING	20 HRS OPERATION	EP2 GREASE
G5	LEVELWIND SCREW BLADE	20 HRS OPERATION	EP2 GREASE
G6	SCREW BEARING	20 HRS OPERATION	EP2 GREASE
G7	LW BEARING HOUSING	20 HRS OPERATION	EP2 GREASE
G8	LW HINGE PINS	MAINTAIN THIN LAYER	EP2 GREASE
G9	GUIDE RODS AND SCREW	MAINTAIN THIN LAYER	EP2 GREASE
G10	TORQUE ARM BEARINGS	20 HRS OPERATION	EP2 GREASE
G11	MAIN GEARBOX OIL	8000 HRS OPERATION	ISO VG 220 SYNTHETIC
G12	LEVELWIND GEARBOX OIL	6000 HRS OPERATION	ISO VG 220 SYNTHETIC

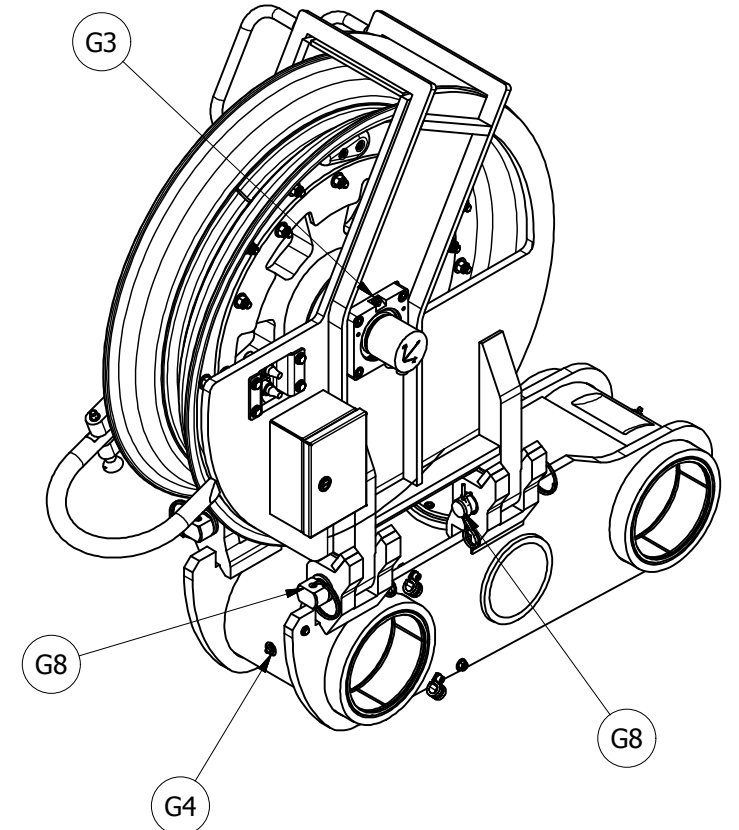
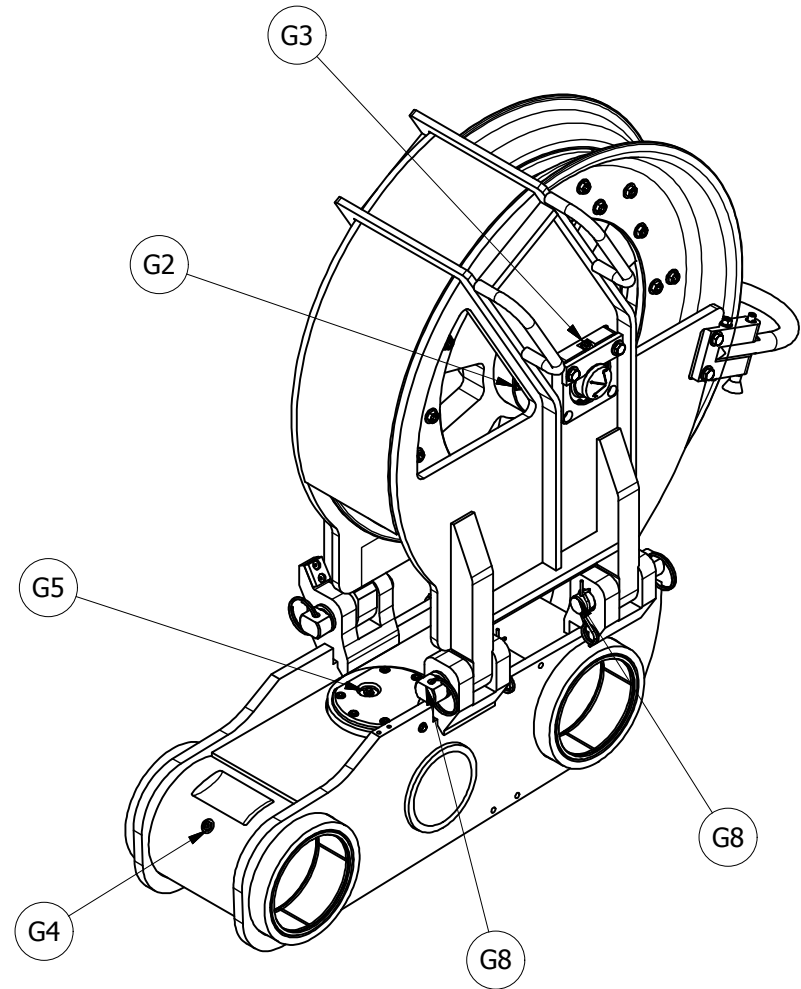
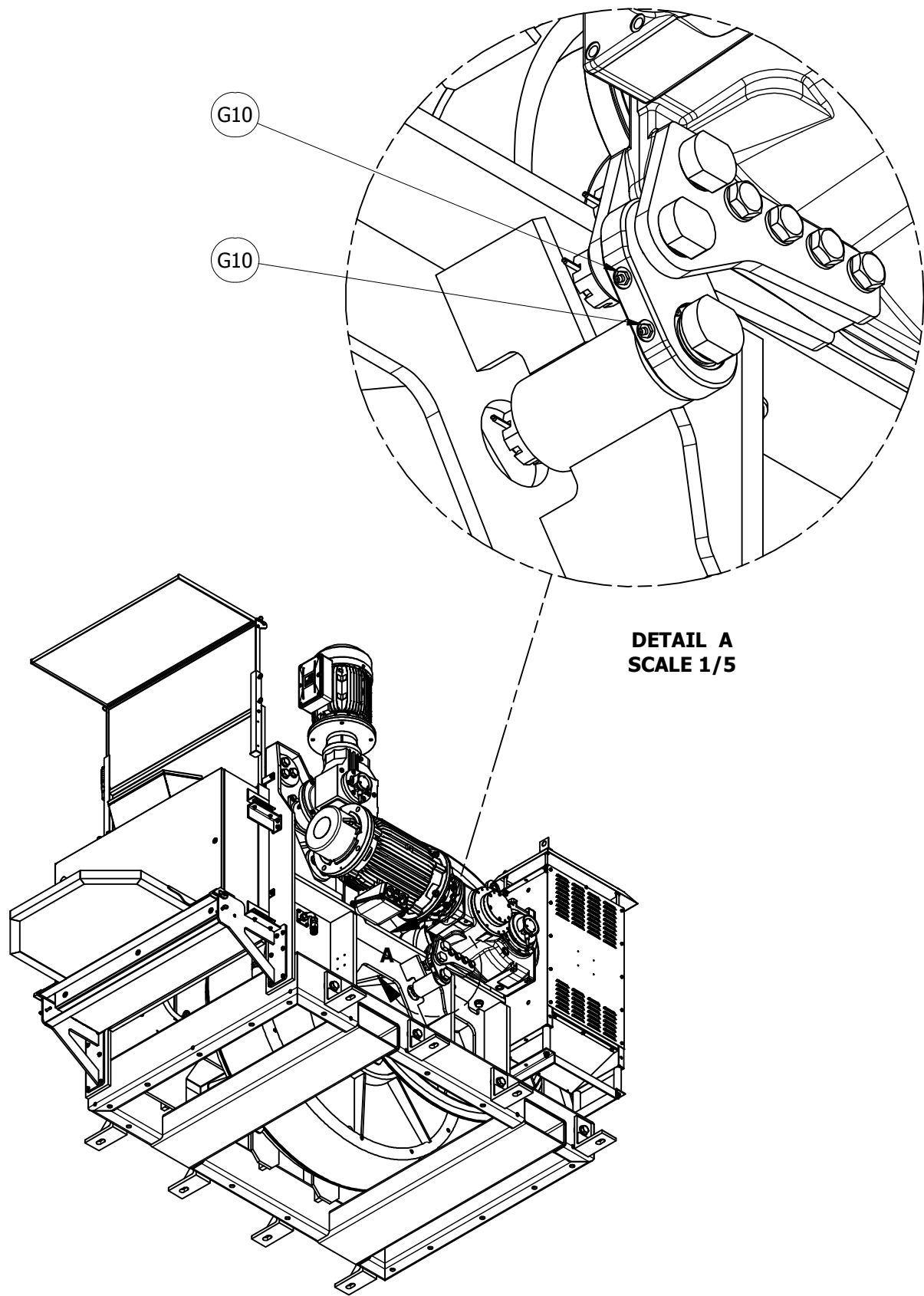
**INSTRUCTIONS:**

- 1) HAWBOLDT TECHNICIAN SHALL INITIAL EACH POINT AS IT IS GREASED. ALL POINTS MUST BE GREASED PRIOR TO SHIPPING.
- 2) LUBRICATION MAINTENANCE SHOULD BE RECORDED IN THE MAINTENANCE LOG IN THE HAWBOLDT INSTALLATION AND MAINTENANCE MANUAL.
- 3) THE FIRST GEARBOX OIL CHANGE SHOULD OCCUR AFTER 100 HOURS OF OPERATION.
- 4) REFER TO GEARBOX MAINTENANCE MANUAL FOR THE PROPER MAINTENANCE PROCEDURE.



This print is the property of Hawboldt Industries Inc. It is loaned with the express agreement that the drawing and the information contained therein are the property of Hawboldt Industries Inc. and will not be reproduced, copied or otherwise disposed of directly or indirectly, and will not be used in whole or in part to assist in making or to furnish any information for making drawings, prints or other reproductions thereof, or for the making of apparatus or parts thereof except upon written permission of Hawboldt Industries Inc. The acceptance of the print will be construed as an acceptance of the foregoing agreement.

STANDARD TOLERANCE UNLESS OTHERWISE SPECIFIED				HAWBOLDT INDUSTRIES (1989) LIMITED P.O. Box 80, Chester, Nova Scotia, Canada, B0J 1J0 Tel: (902) 275-3591 Fax: (902) 275-5014 www.hawboldt.ca	
ALL DIMENSIONS ARE IN INCHES DIMENSIONS IN [ ] ARE IN MM				TITLE SPRE-3464 LUBRICATION DIAGRAM	
WHOLE NUMBER ± 1/16	2 PLC. DECIMAL ± .01	MATL CERT	NEXT ASSEMBLY F400942		DERIVED FROM
FRACTIONAL ± 1/16	3 PLC. DECIMAL ± .005	MATL TEST	FIRST USED ON WO 1942		SHEET 1 OF 2
ANGLES ± 1/2°	4 PLC. DECIMAL ± .0005	WELD TEST	DRAWN NSW		CHECKED DHM
BREAK ALL SHARP CORNERS AND EDGES		EST LBS 0 lbmass		APPROVED DHM	
FINISH ON MACHINED SURFACES	125	ACT LBS	DATE 29-Feb-20	SCALE 1/30	34-00304-082



This print is the property of Hawboldt Industries Inc. It is loaned with the express agreement that the drawing and the information contained therein are the property of Hawboldt Industries Inc. and will not be reproduced, copied or otherwise disposed of directly or indirectly, and will not be used in whole or in part to assist in making or to furnish any information for making drawings, prints or other reproductions thereof, or for the making of apparatus or parts thereof except upon written permission of Hawboldt Industries Inc. The acceptance of the print will be construed as an acceptance of the foregoing agreement.

STANDARD TOLERANCE UNLESS OTHERWISE SPECIFIED		<b>HAWBOLDT INDUSTRIES</b>		HAWBOLDT INDUSTRIES (1989) LIMITED P.O. Box 80, Chester, Nova Scotia, Canada, B0J 1J0 Tel: (902) 275-3591 Fax: (902) 275-5014 www.hawboldt.ca	
ALL DIMENSIONS ARE IN INCHES DIMENSIONS IN [ ] ARE IN MM				TITLE SPRE-3464 LUBRICATION DIAGRAM	
WHOLE NUMBER ± 1/16	2 PLC. DECIMAL ± .01	MATL CERT	NEXT ASSEMBLY F400942		DERIVED FROM
FRACTIONAL ± 1/16	3 PLC. DECIMAL ± .005	MATL TEST	FIRST USED ON WO 1942		SHEET 2 OF 2
ANGLES ± 1/2°	4 PLC. DECIMAL ± .0005	WELD TEST	DRAWN NSW		APPROVED DHM
BREAK ALL SHARP CORNERS AND EDGES		EST LBS	0 lbmass	CHECKED DHM	DATE 29-Feb-20
FINISH ON MACHINED SURFACES	125 ✓	ACT LBS		APPROVED DHM	SCALE 1/30
	⊕			34-00304-082	
	∠				REV